



EMpower v2.56

Installation manual

Minimum requirements for installing and running EMpower:	2
Mac	3
Troubleshooting	4
Windows / Linux	5
Start the Installation	8
Start EMpower	10

Minimum requirements for installing and running EMpower:

	Recommended
CPU	64-bit Intel i7 equivalent or Apple Silicon
RAM	16 GB+
Screen Resolution	1920 x 1080
Installation disk space	200MB
Data disk space	50GB + <i>(depends on the survey)</i>
Internet Connection	Required only at activation time
SD Card reader	USB 3.0 <i>(or better)</i> for data transfer
Monitor Size	13" +

Windows

Versions tested:

- Windows 10, 64-bit
- Windows 11, 64-bit
- Note: Windows 10S or 11S are **not** supported

Permissions required: Must be logged in as Administrator

Linux

Versions tested:

- Ubuntu 20.04.4, 64 bit
- Ubuntu 24.04.4, 64 bit

Permissions required: Standard user

Mac

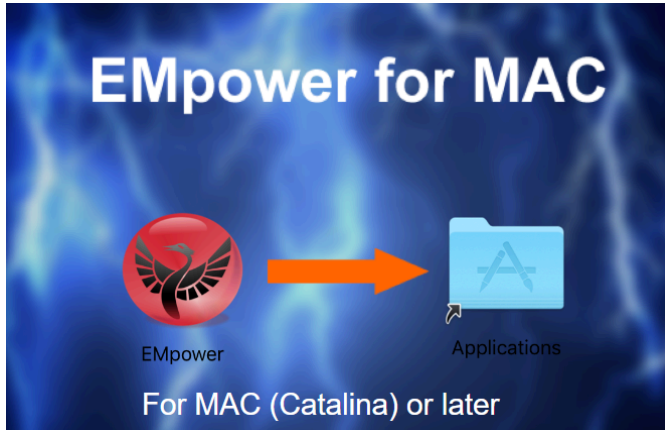
OS versions tested:

- 10.15.4, "Catalina" 64 bit
- 12.0, "Monterey" 64-bit (Apple silicon), Rosetta installed
- 14.4, "Sonoma" 64-bit (Apple silicon), Rosetta installed

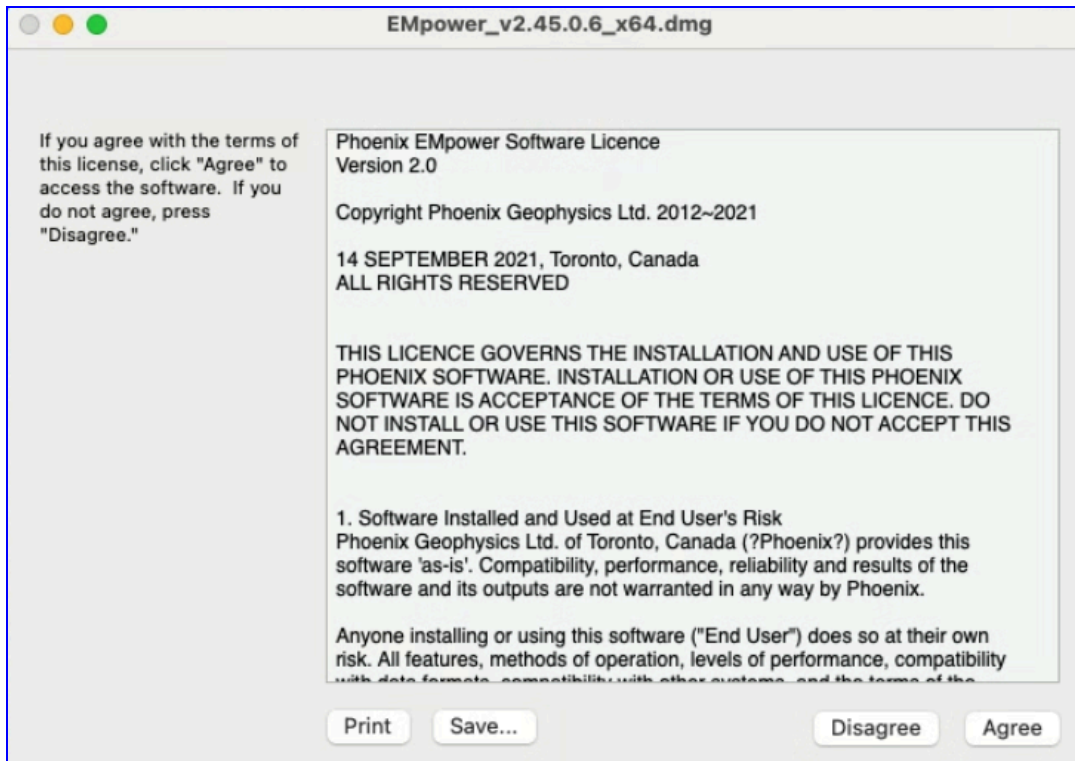
Permissions required: Standard user account

Mac

1. Drag and drop the installer onto the Applications folder to begin the installation.



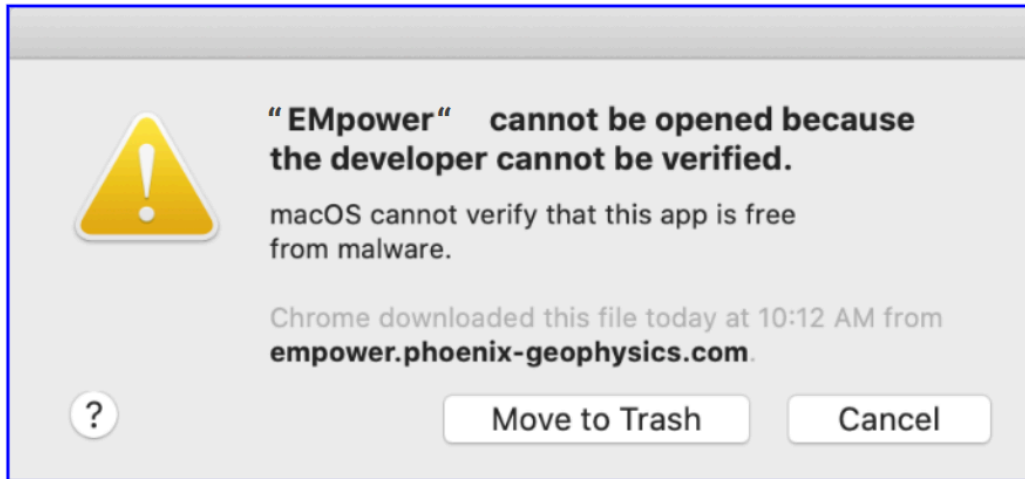
2. Read the EMpower License Agreement



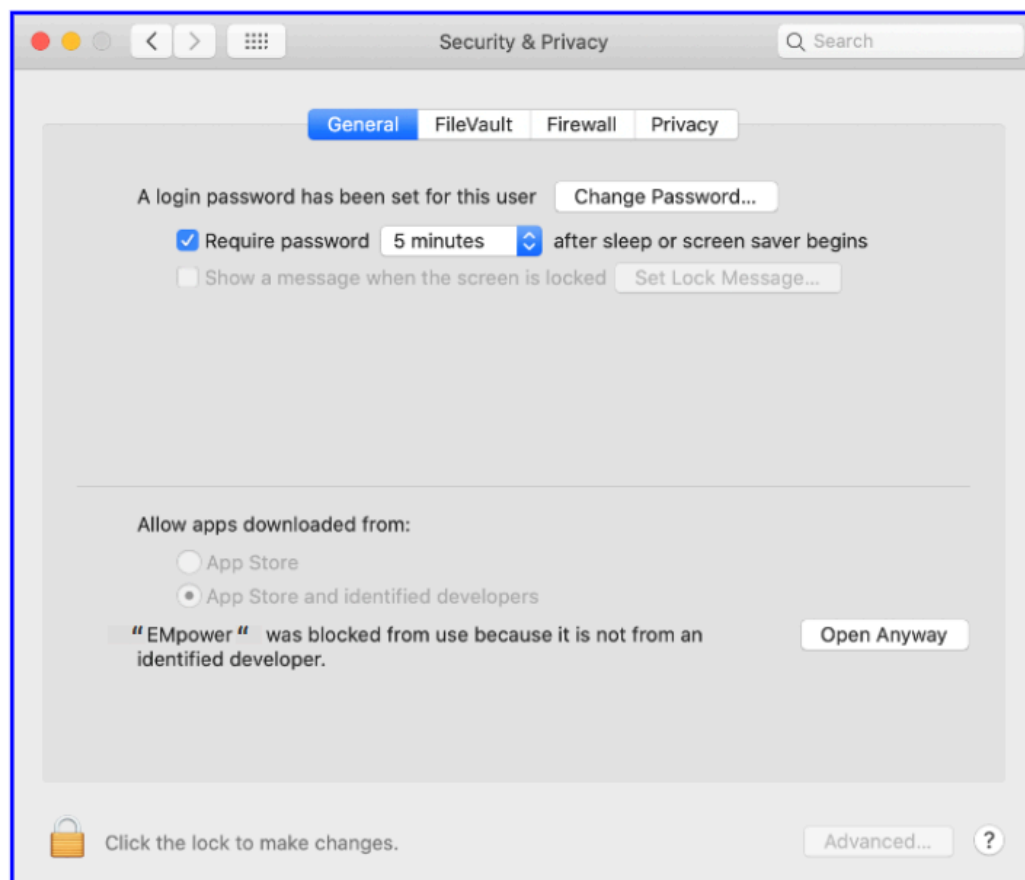
- If you agree with the terms of the EMpower license agreement, then click the **Agree** button

Troubleshooting

1. Mac OS default security settings block installing EMpower because Phoenix is not a registered developer



- To continue the installation, go to macOS System Preferences / Security & Privacy and click on **Open Anyway**



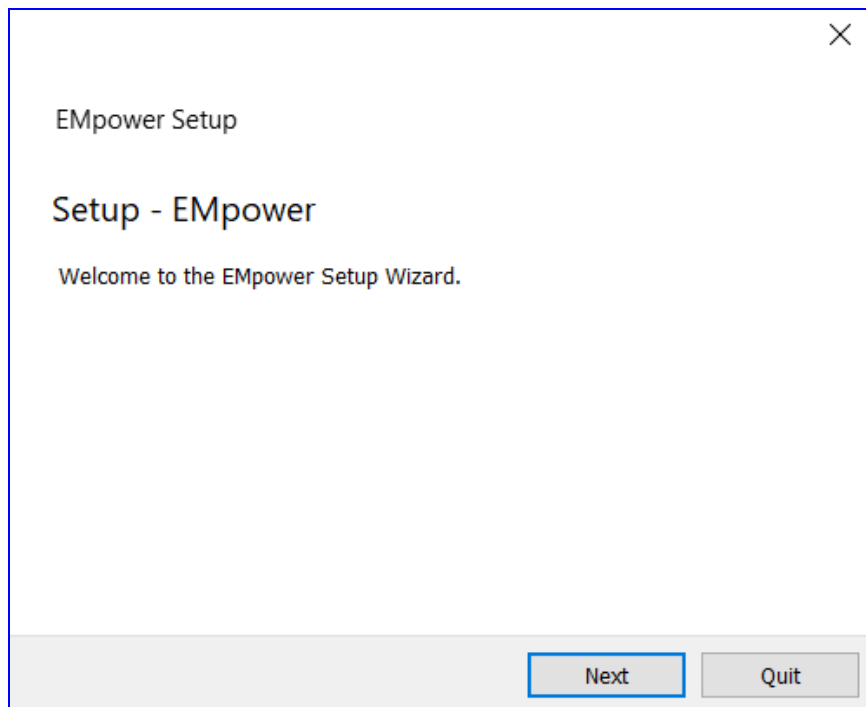
Windows / Linux

1. Launch the EMpower Setup Wizard by double-clicking on the EMpower installation executable file. This file will look similar to the example shown below.

Windows: EMpower_v2.###_x86_amd64.exe

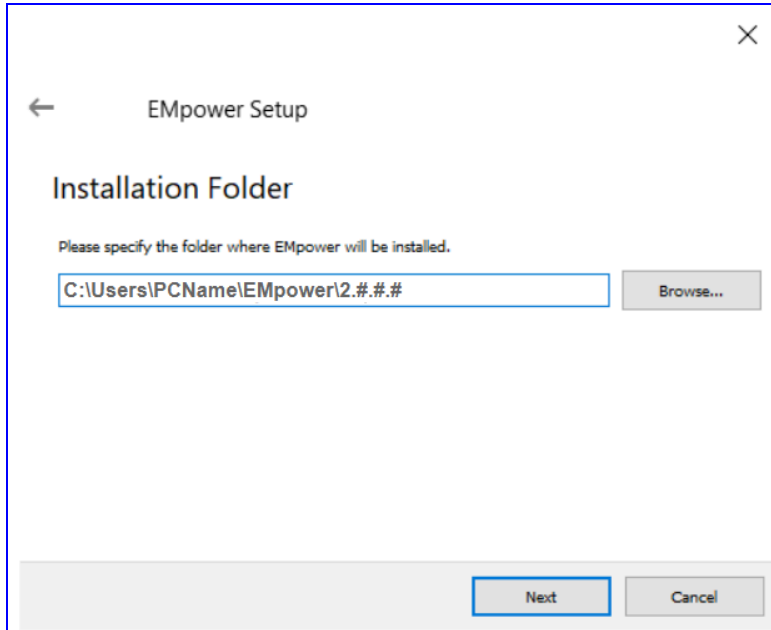
Linux: EMpower_v2.###_x64.run

- Click **Next**



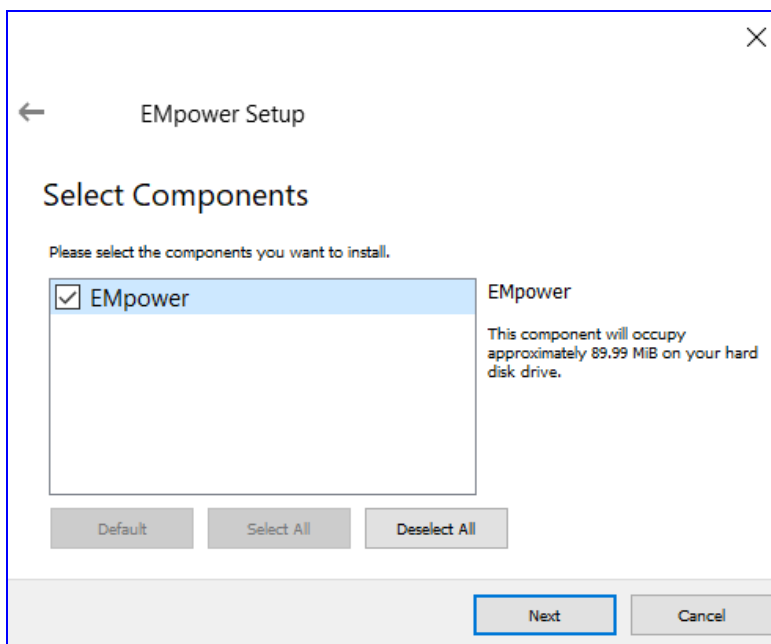
2. Installation Folder

- Use the default directory suggested by the installer, or press Browse to select a different directory
- Click **Next**



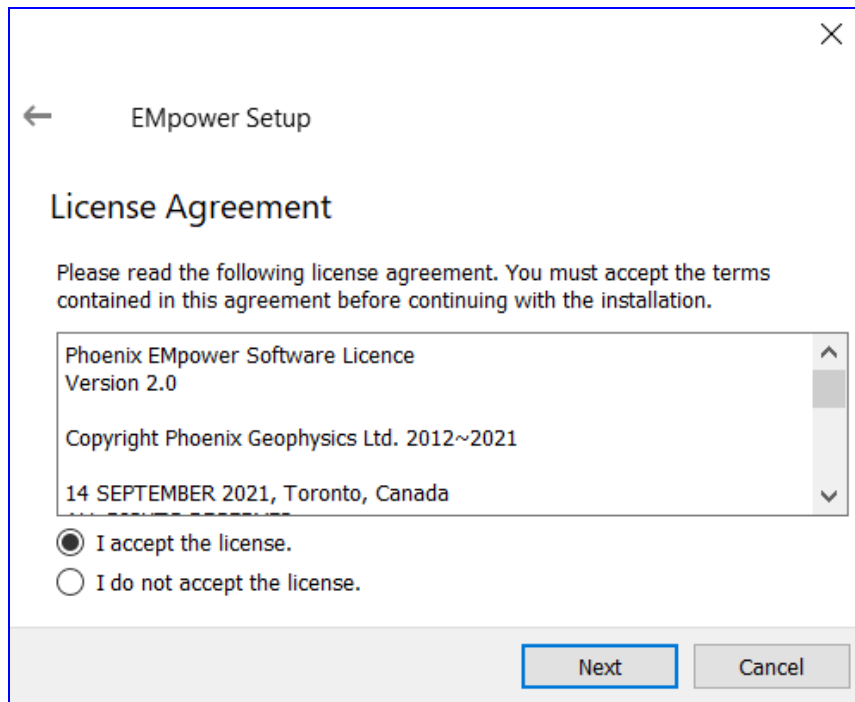
3. Hard drive memory space required

- Review the memory space requirement (*89.99MB*)
- Click **Next**

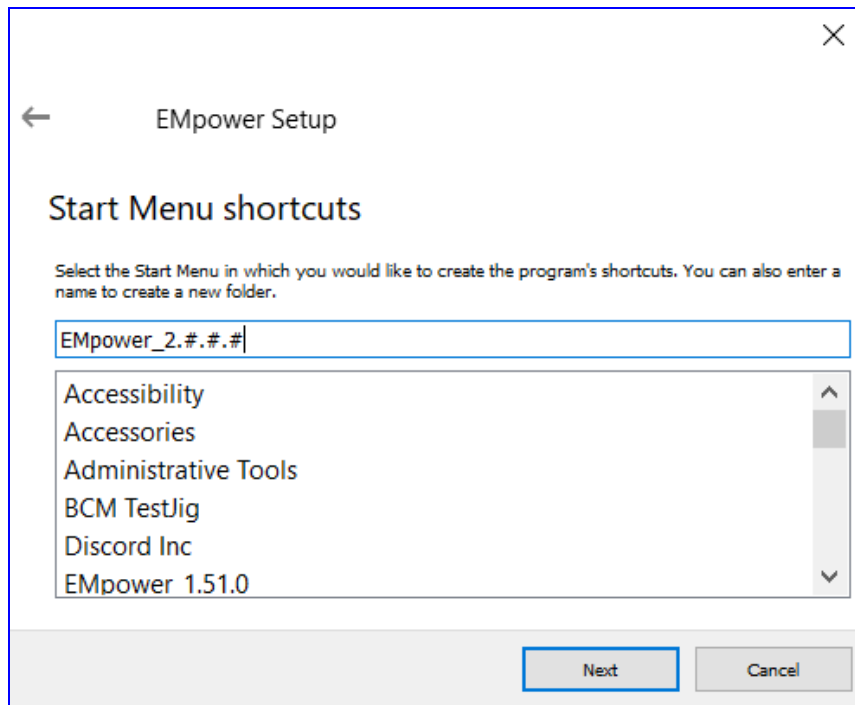


4. Read the **EMpower** License Agreement.

- If you agree with the terms select “**I accept the license**“ option
- Click **Next**

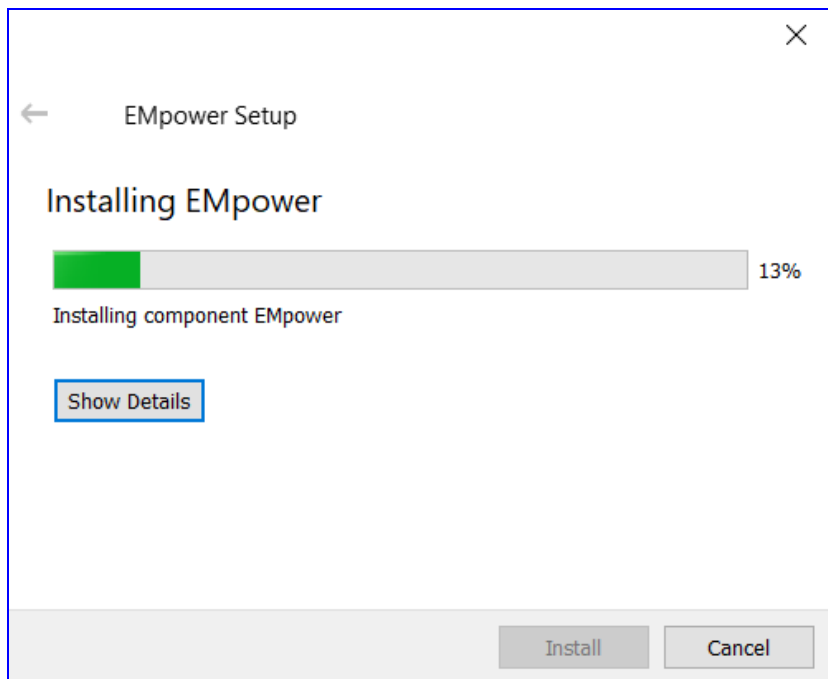
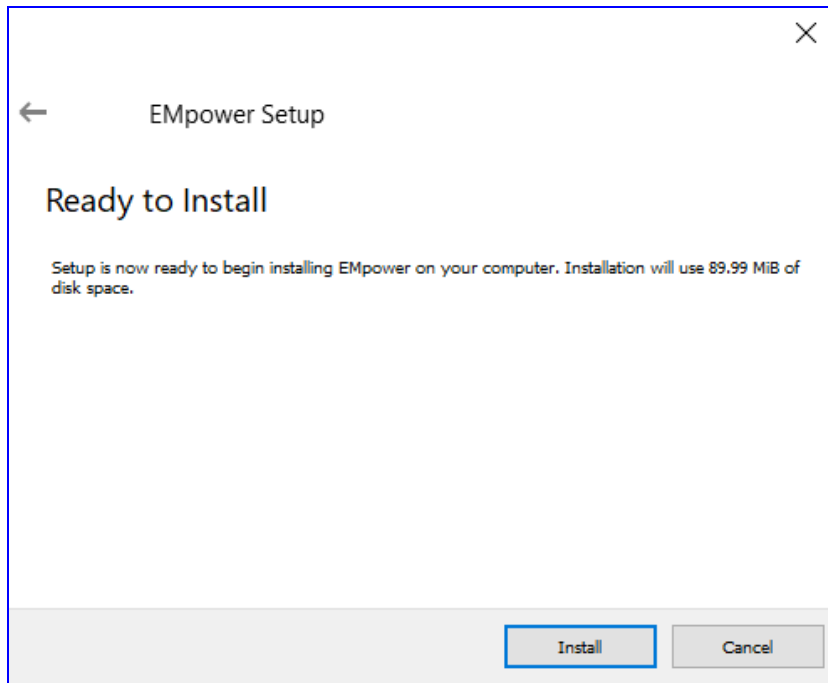


- Click **Next**

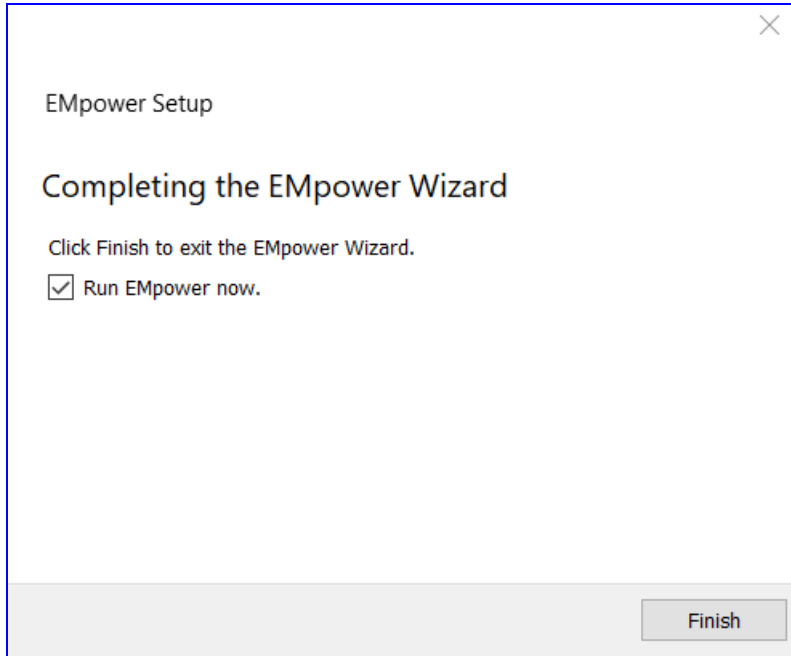


Start the Installation

5. Click the **Install** button to begin the installation (*89.99MB disk space*)

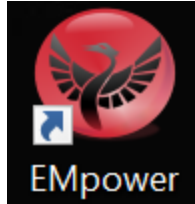


6. Click the **Finish** button to complete the EMpower installation



Start EMpower

1. Click the **EMpower** shortcut icon (Windows / Mac)



- In Linux, run the `empower.sh` script in the EMpower installation directory
2. The Text “Unlicensed” will appear at the bottom of the **EMpower** application window
 - The **Prepare** and **Field QC** modules can be used without a license



3. You can use the Manage module to activate the EMpower license (see DAA13 - Activation Manual EMpower)



Please check out the [FAQs \(https://phoenixgeophysics.freshdesk.com/\)](https://phoenixgeophysics.freshdesk.com/)
Or email us at: support@phoenix-geophysics.com